

P.C.B. LAYOUT

P/N	Contact	Dim A	Dim B	Dim C	Dim D
SB3262X0X	32	40.64	38.10	15.24	17.78
SB2462X0X	24	30.48	27.94	15.24	17.78
SB2862X0X	28	35.56	33.02	15.24	17.78
SB4062X0X	40	50.80	48.26	15.24	17.78

SIGN	DATE	DESCRIPTION	APPROVER
△	02/18'06	Part No. is changed	Aaron
THIS IS CAD DRAWING, DO NOT REVISE MANUALLY!!!			

SB Series

Technical Data

- ◆ Material:
 - Pin (outer sleeve) : Brass, machined, CuZn38Pb2
 - Plating : Tin plated : 2um/80u"nickel, 5um/200u" Tin
 - Insulator body (black) : Gold plated: 2um/80 u"nickel, full gold
 - Glass filled polyester UL94V-0
- ◆ Electrical
 - Current rating : 3 Amps/contact max.
 - Insulation resistance : $\geq 10000M\Omega$ at 500VAC
 - Rated voltage : 100 VRMS /150VDC
- ◆ Mechanical
 - Operating temperature : Gold plated: -550°C to +125°C
 - (Continuous) -67° F to +257° F
 - Tin plated: -40 °C to +105°C
- ◆ Applications and features:
 - The male header contacts are designed for "Sandwich application" because The pin of $\phi 0.5mm/0.050"$ can be plugged into a standard IC-contact.
 - 2.3 different heights are available.
 3. Low profile type..
 4. Side and end stackable.
 5. Twist free construction.
- ◆ Environmental data
 - Solderability (IEC 60068-2-20. Ta) : 235° C, 2s
 - Resistance to soldering heat (IEC 60068-2-20. Tb) : -Through hole mount components : 260° C, 10s

SB - XX 6 2 X 0 0 0 0 G △

No. of contacts : 24p ~ 40p

pin plated: Code

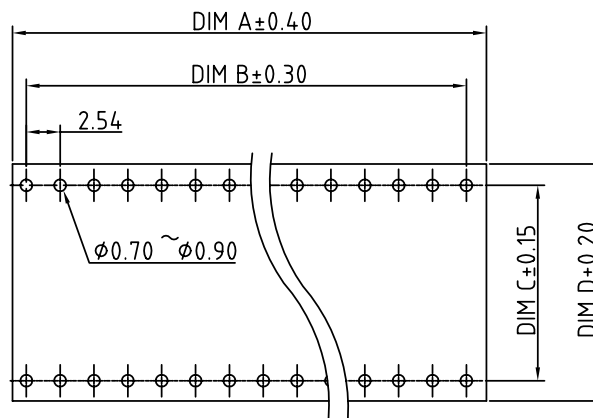
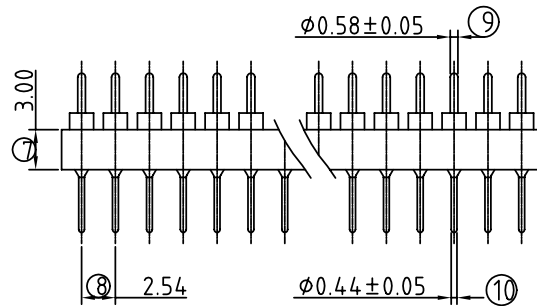
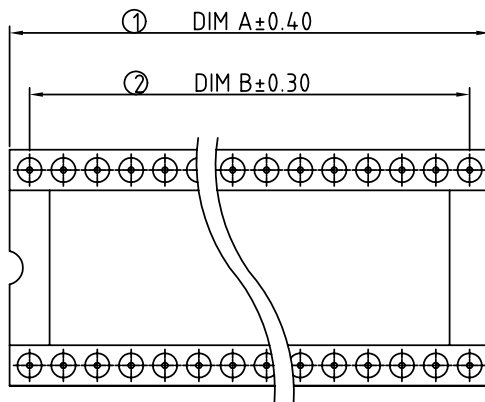
0 Tin 200u"
1 Gold flash
2 Gold 10u"
3 Gold 30u"

ANYTEK

CUSTOMER COPY

ALL RIGHTS RESERVED. REPRODUCTION OR ISSUE TO THIRD PARTIES IN ANY FORM WHATEVER IS NOT PERMITTED WITHOUT WRITTEN AUTHORITY FROM THE PROPRIETOR. PROPERTY OF ANYTEK TECHNOLOGY CO., LTD

TITLE		IC/SKT SB 10.00 mmL finished products series (Open frame W/O bar)			
PART NO.	SAXX62X00000G			DWG NO.	8SB0013
APPROVED	CHECKED	DESIGNED	DRAWN	CUST NO.	Tolerance
		Aaron 2006.02.18	Aaron 2006.02.18	<div><div><div><div><div><div></div><div></div><div></div><div></div><div></div><div></div></div><div></div><div></div><div></div><div></div><div></div></div><div></div><div></div><div></div><div></div><div></div><div></div></div><div></div><div></div><div></div><div></div><div></div><div></div></div><div></div><div></div><div></div><div></div><div></div><div></div></div> <div></div> <div></div> <div></div> <div></div> <div></div> <div></div> <div></div> <div></div> <div></div> <div></div> <div></div> <div></div> <div></div> <div></div> <div></div> <div></div> <div></div> <div></div> <div></div> <div></div> <div></div> <div></div> <div></div> <div></div> <div></div> <div></div> <div></div> <div></div> <div></div> <div></div> <div></div> <div></div> <div></div> <div></div> <div></div> <div></div> <div></div> <div></div> <div></div> <div></div> <div></div> <div></div> <div></div> <div></div> <div></div> <div></div> <div></div> <div></div> <div></div> <div></div> <div></div> <div></div> <div></div> <div></div> <div></div> <div></div> <div></div> <div></div> <div></div> <div></div> <div></div> <div></div> <div></div> <div></div> <div></div> <div></div> <div></div> <div></div> <div></div> <div></div> <div></div> <div></div> <div></div> <div></div> <div></div> <div></div> <div></div> <div></div> <div></div> <div></div> <div></div> <div></div> <div></div> <div></div> <div></div> <div></div> <div></div> <div></div> <div></div> <div></div> <div></div> <div></div> <div></div> <div></div> <div></div> <div></div> <div></div> <div></div> <div></div> <div></div> <div></div> <div></div> <div></div> <div></div> <div></div> <div></div> <div></div> <div></div> <div></div> <div></div> <div></div> <div></div> <div></div> <div></div> <div></div> <div></div> <div></div> <div></div> <div></div> <div></div> <div></div> <div></div> <div></div> <div></div> <div></div> <div></div> <div></div> <div></div> <div></div> <div></div> <div></div> <div></div> <div></div> <div></div> <div></div> <div></div> <div></div> <div></div> <div></div> <div></div> <div></div> <div></div> <div></div> <div></div> <div></div> <div></div> <div></div> <div></div> <div></div> <div></div> <div></div> <div></div> <div></div> <div></div> <div></div> <div></div> <div></div> <div></div> <div></div> <div></div> <div></div> <div></div> <div></div> <div></div> <div></div> <div></div> <div></div> <div></div> <div></div> <div></div> <div></div> <div></div> <div></div> <div></div> <div></div> <div></div> <div></div> <div></div> <div></div> <div></div> <div></div> <div></div> <div></div> <div></div> <div></div> <div></div> <div></div> <div></div> <div></div> <div></div> <div></div> <div></div> <div></div> <div></div> <div></div> <div></div> <div></div> <div></div> <div></div> <div></div> <div></div> <div></div> <div></div> <div></div> <div></div> <div></div> <div></div> <div></div> <div></div> <div></div> <div></div> <div></div> <div></div> <div></div> <div></div> <div></div> <div></div> <div></div> <div></div> <div></div> <div></div> <div></div> <div></div> <div></div> <div></div> <div></div> <div></div> <div></div> <div></div> <div></div> <div></div> <div></div> <div></div> <div></div> <div></div> <div></div> <div></div> <div></div> <div></div> <div></div> <div></div> <div></div> <div></div> <div></div> <div></div> <div></div> <div></div> <div></div> <div></div> <div></div> <div></div> <div></div> <div></div> <div></div> <div></div> <div></div> <div></div> <div></div> <div></div> <div></div> <div></div> <div></div> <div></div> <div></div> <div></div> <div></div> <div></div> <div></div> <div></div> <div></div> <div></div> <div></div> <div></div> <div></div> <div></div> <div></div> <div></div> <div></div> <div></div> <div></div> <div></div> <div></div> <div></div> <div></div> <div></div> <div></div> <div></div> <div></div> <div></div> <div></div> <div></div> <div></div> <div></div> <div></div> <div></div> <div></div> <div></div> <div></div> <div></div> <div></div> <div></div> <div></div> <div></div> <div></div> <div></div> <div></div> <div></div> <div></div> <div></div> <div></div> <div></div> <div></div> <div></div> <div></div> <div></div> <div></div> <div></div> <div></div> <div></div> <div></div> <div></div> <div></div> <div></div> <div></div> <div></div> <div></div> <div></div> <div></div> <div></div> <div></div> <div></div> <div></div> <div></div> <div></div> <div></div> <div></div> <div></div> <div></div> <div></div> <div></div> <div></div> <div></div> <div></div> <div></div> <div></div> <div></div> <div></div> <div></div> <div></div> <div></div> <div></div> <div></div> <div></div> <div></div> <div></div> <div></div> <div></div> <div></div> <div></div> <div></div> <div></div> <div></div> <div></div> <div></div> <div></div> <div></div> <div></div> <div></div> <div></div> <div></div> <div></div> <div></div> <div></div> <div></div> <div></div> <div></div> <div></div> <div></div> <div></div> <div></div> <div></div> <div></div> <div></div> <div></div> <div></div> <div></div> <div></div> <div></div> <div></div> <div></div> <div></div> <div></div> <div></div> <div></div> <div></div> <div></div> <div></div> <div></div> <div></div> <div></div> <div></div> <div></div> <div></div> <div></div> <div></div> <div></div> <div></div> <div></div> <div></div> <div></div> <div></div> <div></div> <div></div> <div></div> <div></div> <div></div> <div></div> <div></div> <div></div> <div></div> <div></div> <div></div> <div></div> <div></div> <div></div> <div></div> <div></div> <div></div> <div></div> <div></div> <div></div> <div></div> <div></div> <div></div> <div></div> <div></div> <div></div> <div></div> <div></div> <div></div> <div></div> <div></div> <div></div> <div></div> <div></div> <div></div> <div></div> <div></div> <div></div> <div></div> <div></div> <div></div> <div></div> <div></div> <div></div> <div></div> <div></div> <div></div> <div></div> <div></div> <div></div> <div></div> <div></div> <div></div> <div></div> <div></div> <div></div> <div></div> <div></div> <div></div> <div></div> <div></div> <div></div> <div></div> <div></div> <div></div> <div></div> <div></div> <div></div> <div></div> <div></div> <div></div> <div></div> <div></div> <div></div> <div></div> <div></div> <div></div> <div></div> <div></div> <div></div> <div></div> <div></div> <div></div> <div></div> <div></div> <div></div> <div></div> <div></div> <div></div> <div></div> <div></div> <div></div> <div></div> <div></div> <div></div> <div></div> <div></div> <div></div> <div></div> <div></div> <div></div> <div></div> <div></div> <div></div> <div></div> <div></div> <div></div> <div></div> <div></div> <div></div> <div></div> <div></div> <div></div> <div></div> <div></div> <div></div> <div></div> <div></div> <div></div> <div></div> <div></div> <div></div> <div></div> <div></div> <div></div> <div></div> <div></div> <div></div> <div></div> <div></div> <div></div> <div></div> <div></div> <div></div> <div></div> <div></div> <div></div> <div></div> <div></div> <div></div> <div></div> <div></div> <div></div> <div></div> <div></div> <div></div> <div></div> <div></div> <div></div> <div></div> <div></div> <div></div> <div></div> <div></div> <div></div> <div></div> <div></div> <div></div> <div></div> <div></div> <div></div> <div></div> <div></div> <div></div> <div></div> <div></div> <div></div> <div></div> <div></div> <div></div> <div></div> <div></div> <div></div> <div></div> <div></div> <div></div> <div></div> <div></div> <div></div> <div></div> <div></div> <div></div> <div></div> <div></div> <div></div> <div></div> <div></div> <div></div> <div></div> <div></div> <div></div> <div></div> <div></div> <div></div> <div></div> <div></div> <div></div> <div></div> <div></div> <div></div> <div></div> <div></div> <div></div> <div></div> <div></div> <div></div> <div></div> <div></div> <div></div> <div></div> <div></div> <div></div> <div></div> <div></div> <div></div> <div></div> <div></div> <div></div> <div></div> <div></div> <div></div> <div></div> <div></div> <div></div> <div></div> <div></div> <div></div> <div></div> <div></div> <div></div> <div></div> <div></div> <div></div> <div></div> <div></div> <div></div> <div></div> <div></div> <div></div> <div></div> <div></div> <div></div> <div></div> <div></div> <div></div> <div></div> <div></div> <div></div> <div></div> <div></div> <div></div> <div></div> <div></div> <div></div> <div></div> <div></div> <div></div> <div></div> <div></div> <div></div> <div></div> <div></div> <div></div> <div></div> <div></div> <div></div> <div></div> <div></div> <div></div> <div></div> <div></div> <div></div> <div></div> <div></div> <div></div> <div></div> <div></div> <div></div> <div></div> <div></div> <div></div> <div></div> <div></div> <div></div> <div></div> <div></div> <div></div> <div></div> <div></div> <div></div> <div></div> <div></div> <div></div> <div></div> <div></div> <div></div> <div></div> <div></div> <div></div> <div></div> <div></div> <div></div> <div></div> <div></div> <div></div> <div></div> <div></div> <div></div> <div></div> <div></div> <div></div> <div></div> <div></div> <div></div> <div></div> <div></div> <div></div> <div></div> <div></div> <div></div> <div></div> <div></div> <div></div> <div></div> <div></div> <div></div> <div></div> <div></div> <div></div> <div></div> <div></div> <div></div> <div></div> <div></div> <div></div> <div></div> <div></div> <div></div> <div></div> <div></div> <div></div> <div></div> <div></div> <div></div> <div></div> <div></div> <div></div> <div></div> <div></div> <div></div> <div></div> <div></div> <div></div> <div></div> <div></div> <div></div> <div></div> <div></div> <div></div> <div></div> <div></div> <div></div> <div></div> <div></div> <div></div> <div></div> <div></div> <div></div> <div></div> <div></div> <div></div> <div></div> <div></div> <div></div> <div></div> <div></div> <div></div> <div></div> <div></div> <div></div> <div></div> <div></div> <div></div> <div></div> <div></div> <div></div> <div></div> <div></div> <div></div> <div></div> <div></div> <div></div> <div></div> <div></div> <div></div> <div></div> <div></div> <div></div> <div></div> <div></div> <div></div> <div></div> <div></div> <div></div> <div></div> <div></div> <div></div> <div></div> <div></div> <div></div> <div></div> <div></div> <div></div> <div></div> <div></div> <div></div> <div></div> <div></div> <div></div> <div></div> <div></div> <div></div> <div></div> <div></div> <div></div> <div></div> <div></div> <div></div> <div></div> <div></div> <div></div> <div></div> <div></div> <div></div> <div></div> <div></div> <div></div> <div></div> <div></div> <div></div> <div></div> <div></div> <div></div> <div></div> <div></div> <div></div> <div></div> <div></div> <div></div> <div></div> <div></div> <div></div> <div></div> <div></div> <div></div> <div></div> <div></div> <div></div> <div></div> <div></div> <div></div> <div></div> <div></div> <div></div> <div></div> <div></div> <div></div> <div></div> <div></div> <div></div> <div></div> <div></div> <div></div> <div></div> <div></div> <div></div> <div></div> <div></div> <div></div> <div></div> <div></div> <div></div> <div></div> <div></div> <div></div> <div></div> <div></div> <div></div> <div></div> <div></div> <div></div> <div></div> <div></div> <div></div> <div></div> <div></div> <div></div> <div></div> <div></div> <div></div> <div></div> <div></div> <div></div> <div></div> <div></div> <div></div> <div></div> <div></div> <div></div> <div></div> <div></div> <div></div> <div></div> <div></div> <div></div> <div></div> <div></div> <div></div> <div></div> <div></div> <div></div> <div></div> <div></div> <div></div> <div></div> <div></div> <div></div> <div></div> <div></div> <div></div> <div></div> <div></div> <div></div> <div></div> <div></div> <div></div> <div></div> <div></div> <div></div> <div></div> <div></div> <div></div> <div></div> <div></div> <div></div> <div></div> <div></div> <div></div> <	



P.C.B. LAYOUT

P/N	Contact	Dim A	Dim B	Dim C	Dim D
SB3262X0X	32	40.64	38.10	15.24	17.78
SB2462X0X	24	30.48	27.94	15.24	17.78
SB2862X0X	28	35.56	33.02	15.24	17.78
SB4062X0X	40	50.80	48.26	15.24	17.78

SIGN	DATE	DESCRIPTION	APPROVER
△	02/18'06	Part No. is changed	Aaron
THIS IS CAD DRAWING, DO NOT REVISE MANUALLY!!!			

SB Series

Technical Data

- ◆ Material:
 - Pin (outer sleeve) : Brass, machined, CuZn38Pb2
 - Plating : Tin plated : 2um/80u"nickel, 5um/200u" Tin
 - Gold plated: 2um/80 u"nickel, full gold
- Insulator body (black) : Glass filled polyester UL94V-0
- ◆ Electrical
 - Current rating : 3 Amps/contact max.
 - Insulation resistance : ≥10000MΩat 500VAC
 - Rated voltage : 100 VRMS /150VDC
- ◆ Mechanical
 - Operating temperature : Gold plated: -550°C to +125°C
 - (Continuous) -67° F to +257° F
 - Tin plated: -40 °C to +105°C
- ◆ Applications and features:
 1. The male header contacts are designed for "Sandwich application" because The pin of Φ0.5mm/0.050" can be plugged into a standard IC-contact.
 2. 3 different heights are available.
 3. Low profile type..
 4. Side and end stackable.
 5. Twist free construction.
- ◆ Environmental data
 - Solderability (IEC 60068-2-20. Ta) : 235° C, 2s
 - Resistance to soldering heat (IEC 60068-2-20. Tb) :
 - Through hole mount components : 260° C, 10s

SB - XX 6 2 X 1 0 0 0 0 G △

No. of contacts : 24p ~ 40p

pin plated: Code

0 Tin 200u"
1 Gold flash
2 Gold 10u"
3 Gold 30u"

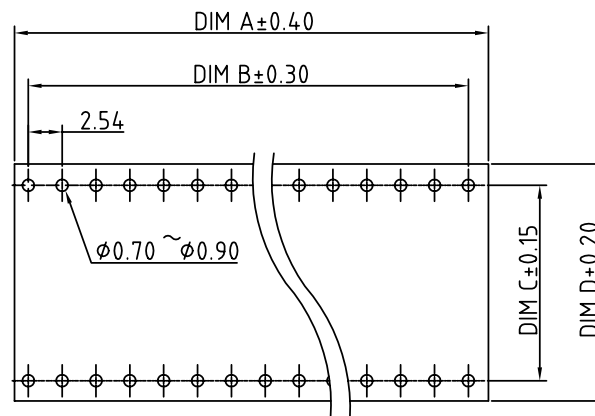
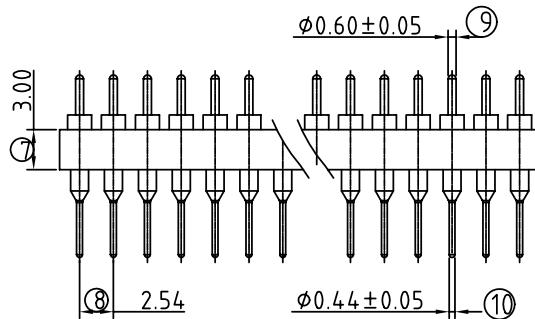
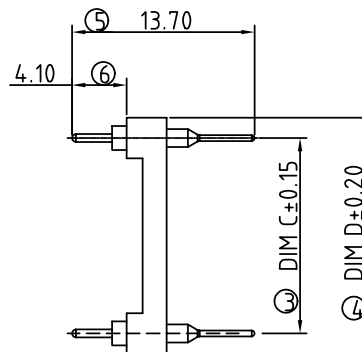
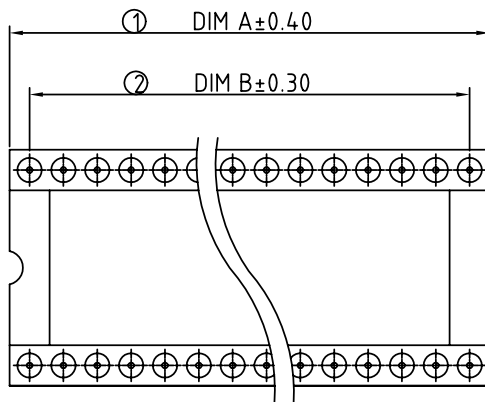
Pin plated

ANYTEK

CUSTOMER COPY

ALL RIGHTS RESERVED. REPRODUCTION OR ISSUE TO THIRD PARTIES IN ANY FORM WHATSOEVER IS NOT PERMITTED WITHOUT WRITTEN AUTHORITY FROM THE PROPRIETOR. PROPERTY OF ANYTEK TECHNOLOGY CO., LTD

TITLE		IC/SKT SB 11.96 mmL finished products series (Open frame W/O bar)			
PART NO.	SAXX62X10000G			DWG NO.	8SB0014
APPROVED	CHECKED	DESIGNED	DRAWN	CUST NO.	
		Aaron 2006.02.18	Aaron 2006.02.18		
				UNIT: mm	X. ±0.50
				SCALE: NONE	X.X ±0.30
				X* ±1°	X.XX ±0.10
				SHEET: 01/01	REV: C



P.C.B. LAYOUT

P/N	Contact	Dim A	Dim B	Dim C	Dim D
SB3262X0X	32	40.64	38.10	15.24	17.78
SB2462X0X	24	30.48	27.94	15.24	17.78
SB2862X0X	28	35.56	33.02	15.24	17.78
SB4062X0X	40	50.80	48.26	15.24	17.78

SIGN	DATE	DESCRIPTION	APPROVER
△	02/18'06	Part No. is changed	Aaron
THIS IS CAD DRAWING, DO NOT REVISE MANUALLY!!!			

SB Series

Technical Data

- ◆ Material:
 - Pin (outer sleeve) : Brass, machined, CuZn38Pb2
 - Plating : Tin plated : 2um/80u"nickel, 5um/200u" Tin
 - Insulator body (black) : Gold plated: 2um/80 u"nickel, full gold
 - Glass filled polyester UL94V-0
- ◆ Electrical
 - Current rating : 3 Amps/contact max.
 - Insulation resistance : ≥10000MΩat 500VAC
 - Rated voltage : 100 VRMS /150VDC
- ◆ Mechanical
 - Operating temperature : Gold plated: -550°C to +125°C
 - (Continuous) -67° F to +257° F
 - Tin plated: -40 °C to +105°C

Applications and features:

- The male header contacts are designed for "Sandwich application" because The pin of $\Phi 0.5\text{mm}/0.050$ " can be plugged into a standard IC-contact.
 - 2.3 different heights are available.
 3. Low profile type..
 4. Side and end stackable.
 5. Twist free construction.
- ◆ Environmental data
- Solderability (IEC 60068-2-20. Ta) : 235° C, 2s
 - Resistance to soldering heat (IEC 60068-2-20. Tb) : -Through hole mount components : 260° C, 10s

SB - XX 6 2 X 2 0 0 0 0 G △

No. of contacts : 24p ~ 40p

pin plated: Code

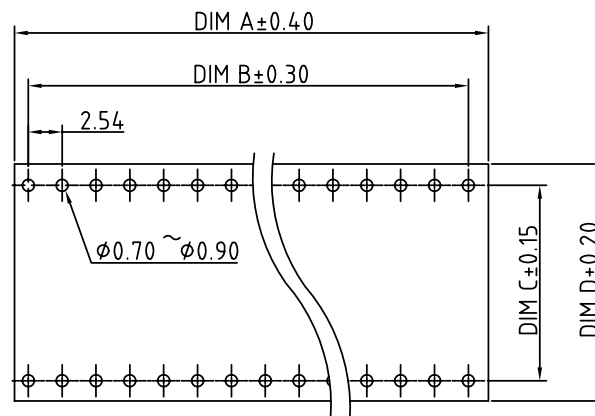
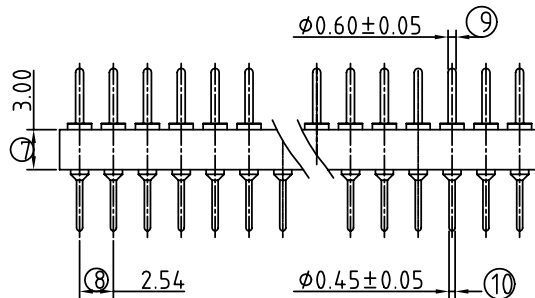
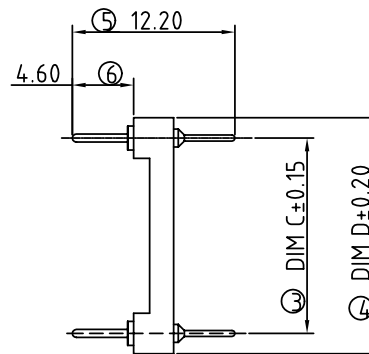
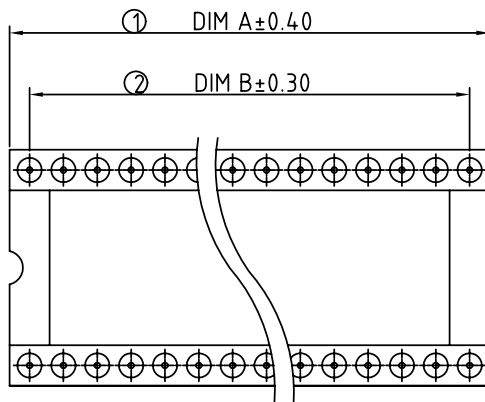
0 Tin 200u"
1 Gold flash
2 Gold 10u"
3 Gold 30u"

ANYTEK

CUSTOMER COPY

ALL RIGHTS RESERVED. REPRODUCTION OR ISSUE TO THIRD PARTIES IN ANY FORM WHATEVER IS NOT PERMITTED WITHOUT WRITTEN AUTHORITY FROM THE PROPRIETOR. PROPERTY OF ANYTEK TECHNOLOGY CO., LTD

TITLE		IC/SKT SB 13.70 mmL finished products series (Open frame W/O bar)			
PART NO.	SAXX62X20000G			DWG NO.	8SB0015
APPROVED	CHECKED	DESIGNED	DRAWN	CUST NO.	<div><div></div><div>UNIT: mm</div><div>SCALE: NONE</div><div>REV.: C</div></div> <div>Tolerance</div> <div>X. ±0.50</div> <div>X.X ±0.30</div> <div>X.XX ±0.10</div> <div>X* ±1*</div>
		Aaron 2006.02.18	Aaron 2006.02.18	<div><div></div><div>SHEET: 01/01</div></div>	



P.C.B. LAYOUT

P/N	Contact	Dim A	Dim B	Dim C	Dim D
SB3262X0X	32	40.64	38.10	15.24	17.78
SB2462X0X	24	30.48	27.94	15.24	17.78
SB2862X0X	28	35.56	33.02	15.24	17.78
SB4062X0X	40	50.80	48.26	15.24	17.78

SIGN	DATE	DESCRIPTION	APPROVER
△	02/18'06	Part No. is changed	Aaron
THIS IS CAD DRAWING, DO NOT REVISE MANUALLY!!!			

SB Series

Technical Data

- ◆ Material:
 - Pin (outer sleeve) : Brass, machined, CuZn38Pb2
 - Plating :
 - Tin plated : 2um/80u"nickel, 5um/200u" Tin
 - Gold plated: 2um/80 u"nickel, full gold
 - Glass filled polyester UL94V-0
- ◆ Electrical
 - Current rating : 3 Amps/contact max.
 - Insulation resistance : ≥10000MΩat 500VAC
 - Rated voltage : 100 VRMS /150VDC
- ◆ Mechanical
 - Operating temperature : Gold plated: -550°C to +125°C
 - (Continuous) -67° F to +257° F
 - Tin plated: -40 °C to +105°C

Applications and features:

- The male header contacts are designed for "Sandwich application" because The pin of Φ0.5mm/0.050" can be plugged into a standard IC-contact.
- 2.3 different heights are available.
3. Low profile type..
4. Side and end stackable.
5. Twist free construction.

Environmental data

- Solderability (IEC 60068-2-20. Ta) : 235° C, 2s
- Resistance to soldering heat (IEC 60068-2-20. Tb) :
- Through hole mount components : 260° C, 10s

SB - XX 6 2 X 3 0 0 0 G △

No. of contacts : 24p ~ 40p

pin plated: Code

Pin plated

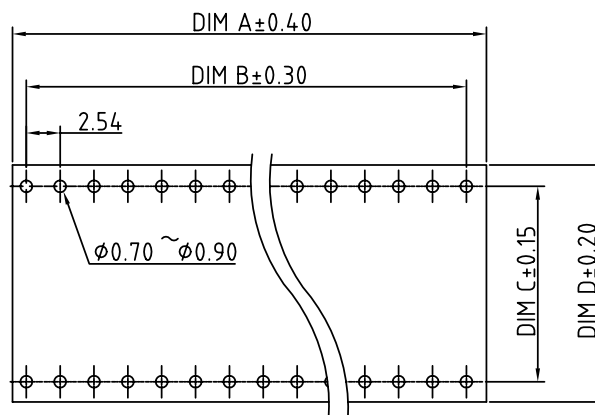
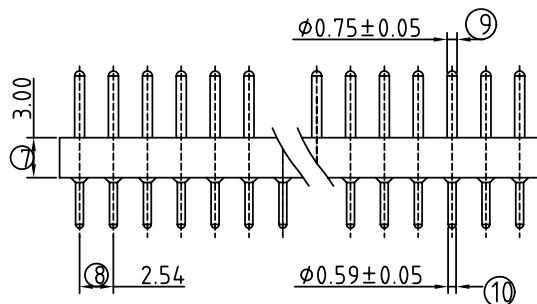
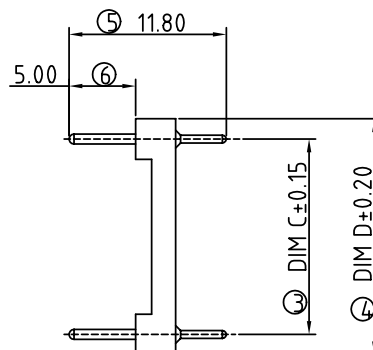
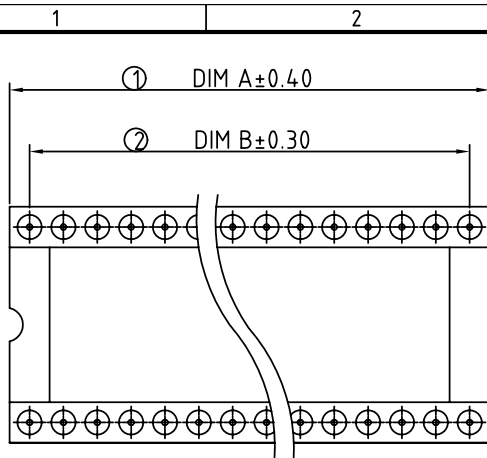
- 0 Tin 200u"
- 1 Gold flash
- 2 Gold 10u"
- 3 Gold 30u"

ANYTEK

CUSTOMER COPY

ALL RIGHTS RESERVED. REPRODUCTION OR ISSUE TO THIRD PARTIES IN ANY FORM WHATSOEVER IS NOT PERMITTED WITHOUT WRITTEN AUTHORITY FROM THE PROPRIETOR. PROPERTY OF ANYTEK TECHNOLOGY CO., LTD

TITLE		IC/SKT SB 12.20 mmL finished products series (Open frame W/O bar)			
PART NO.	SAXX62X30000G			DWG NO.	8SB0016
APPROVED	CHECKED	DESIGNED	DRAWN	CUST NO.	Tolerance
		Aaron 2006.02.18	Aaron 2006.02.18	<div><div><div></div><div></div></div><div>UNIT: mm</div></div> <div><div>SCALE: NONE</div><div>REV.: C</div></div>	
				SHEET: 01/01	X. ±0.50
					X.X ±0.30
					X.XX ±0.10
					X* ±1°



P.C.B. LAYOUT

P/N	Contact	Dim A	Dim B	Dim C	Dim D
SB3262X0X	32	40.64	38.10	15.24	17.78
SB2462X0X	24	30.48	27.94	15.24	17.78
SB2862X0X	28	35.56	33.02	15.24	17.78
SB4062X0X	40	50.80	48.26	15.24	17.78

SIGN	DATE	DESCRIPTION	APPROVER
△	02/18'06	Part No. is changed	Aaron
THIS IS CAD DRAWING, DO NOT REVISE MANUALLY!!!			

SB Series

Technical Data

- ◆ Material:
 - Pin (outer sleeve) : Brass,machined, CuZn38Pb2
 - Plating : Tin plated : 2um/80u"nickel,5um/200u"Tin
 - Gold plated: 2um/80 u"nickel,full gold
 - Insulator body(black) : Glass filled polyester UL94V-0
- ◆ Electrical
 - Current rating : 3 Amps/contact max.
 - Insulation resistance : ≥10000MΩat 500VAC
 - Rated voltage : 100 VRMS /150VDC
- ◆ Mechanical
 - Operating temperature : Gold plated: -550°C to +125°C
 - (Continuous) -67° F to +257° F
 - Tin plated: -40 °C to +105°C
- ◆ Applications and features:
 - 1.The male header contacts are designed for "Sandwich application" because The pin of Φ0.5mm/0.050" can be plugged into a standard IC-contact.
 - 2.3 different heights are available.
 - 3.Low profile type..
 - 4.Side and end stackable.
 - 5.Twist free construction.
- ◆ Environmental data
 - Solderability (IEC 60068-2-20. Ta) :235° C, 2s
 - Resistance to soldering heat (IEC 60068-2-20. Tb) :
 - Through hole mount components :260° C, 10s

SB - XX 6 2 X 5 0 0 0 0 G △

No.of contacts : 24p ~ 40p

pin plated: Code

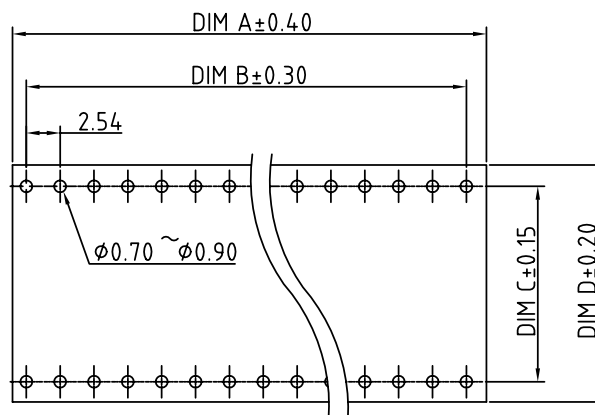
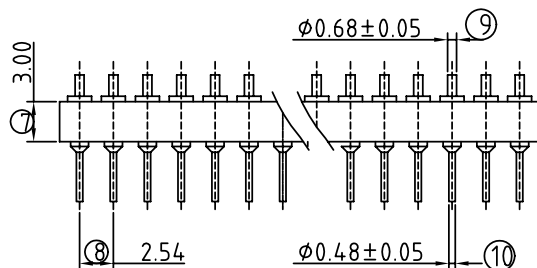
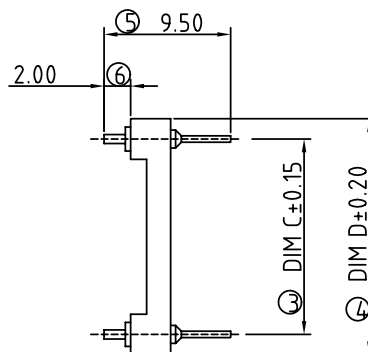
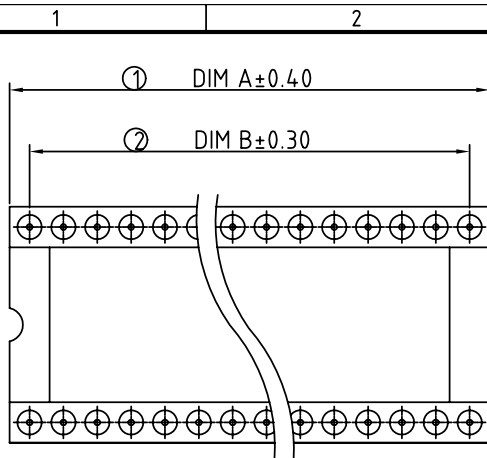
0 Tin 200u"
1 Gold flash
2 Gold 10u"
3 Gold 30u"

ANYTEK

CUSTOMER COPY

ALL RIGHTS RESERVED. REPRODUCTION OR ISSUE TO THIRD PARTIES IN ANY FORM WHATEVER IS NOT PERMITTED WITHOUT WRITTEN AUTHORITY FROM THE PROPRIETOR. PROPERTY OF ANYTEK TECHNOLOGY CO., LTD

TITLE		IC/SKT SB 11.80 mmL finished products series (Open frame W/O bar)			
PART NO.	SAXX62X50000G			DWG NO.	8SB0018
APPROVED	CHECKED	DESIGNED	DRAWN	CUST NO.	
		Aaron 2006.02.18	Aaron 2006.02.18		Tolerance
					X. ±0.50
					X.X ±0.30
					X.XX ±0.10
					X* ±1*
				SHEET: 01/01	REV.: C



P.C.B. LAYOUT

P/N	Contact	Dim A	Dim B	Dim C	Dim D
SB3262X0X	32	40.64	38.10	15.24	17.78
SB2462X0X	24	30.48	27.94	15.24	17.78
SB2862X0X	28	35.56	33.02	15.24	17.78
SB4062X0X	40	50.80	48.26	15.24	17.78

SIGN	DATE	DESCRIPTION	APPROVER
△	02/18'06	Part No. is changed	Aaron
THIS IS CAD DRAWING, DO NOT REVISE MANUALLY!!!			

SB Series

Technical Data

- ◆ Material:
 - Pin (outer sleeve) : Brass, machined, CuZn38Pb2
 - Plating :
 - Tin plated : 2um/80u"nickel, 5um/200u" Tin
 - Gold plated: 2um/80 u"nickel, full gold
 - Glass filled polyester UL94V-0
- ◆ Electrical
 - Current rating : 3 Amps/contact max.
 - Insulation resistance : ≥10000MΩat 500VAC
 - Rated voltage : 100 VRMS /150VDC
- ◆ Mechanical
 - Operating temperature : Gold plated: -550°C to +125°C
 - (Continuous) -67° F to +257° F
 - Tin plated: -40 °C to +105°C

Applications and features:

- The male header contacts are designed for "Sandwich application" because The pin of $\Phi 0.5\text{mm}/0.050$ " can be plugged into a standard IC-contact.
- 2.3 different heights are available.
3. Low profile type..
4. Side and end stackable.
5. Twist free construction.

◆ Environmental data

- Solderability (IEC 60068-2-20. Ta) : 235° C, 2s
- Resistance to soldering heat (IEC 60068-2-20. Tb) :
 - Through hole mount components : 260° C, 10s

SB - XX 6 2 X 4 0 0 0 G △

No. of contacts : 24p ~ 40p


pin plated: Code

0 Tin 200u"
1 Gold flash
2 Gold 10u"
3 Gold 30u"

ANYTEK

CUSTOMER COPY

ALL RIGHTS RESERVED. REPRODUCTION OR ISSUE TO THIRD PARTIES IN ANY FORM WHATSOEVER IS NOT PERMITTED WITHOUT WRITTEN AUTHORITY FROM THE PROPRIETOR. PROPERTY OF ANYTEK TECHNOLOGY CO., LTD

TITLE		IC/SKT SB 9.50 mmL finished products series (Open frame W/O bar)				
PART NO.	SAXX62X40000G			DWG NO.	8SB0017	
APPROVED	CHECKED	DESIGNED	DRAWN	CUST NO.		
		Aaron 2006.02.18	Aaron 2006.02.18		UNIT: mm	X. ±0.50
					SCALE: NONE	X.X ±0.30
				SHEET: 01/01	REV: C	X.XX ±0.10
						X* ±1*