

1

2

3

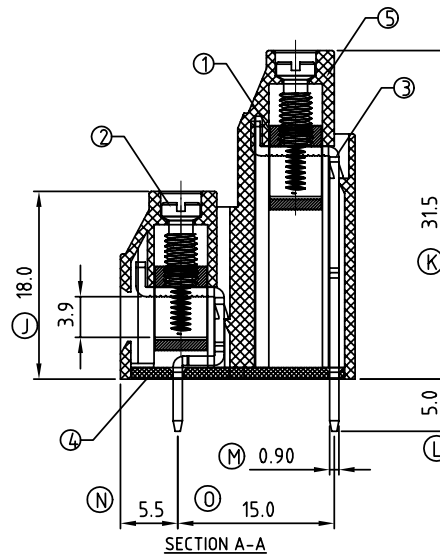
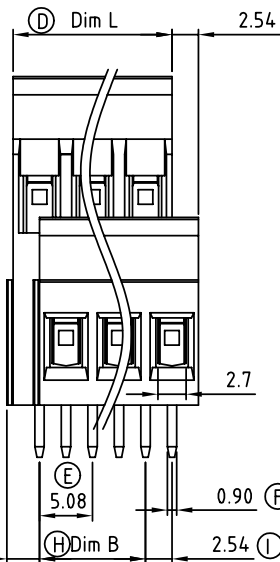
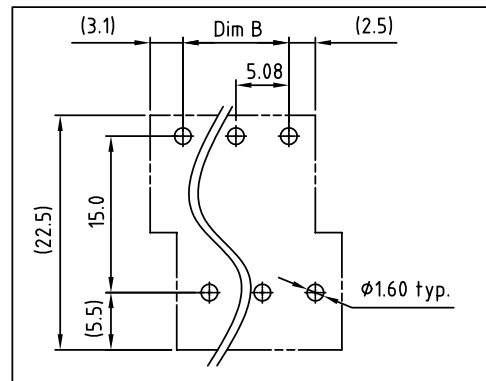
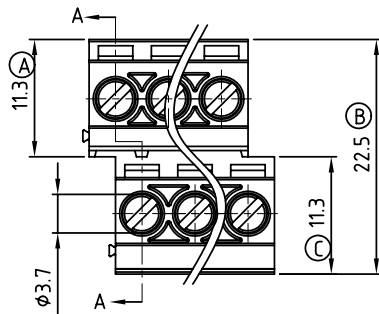
4

5

6

7

SIGN	DATE	DESCRIPTION	APPROVER
△	10/09'09	Add is cULcs Mark	Aaron
THIS IS CAD DRAWING, DO NOT REVISE MANUALLY!!!			



Material

- Item ① Clamp : Brass, Ni plated
- Item ② Terminal screw : Steel, Zinc plating "--" slot type
- Item ③ Wire guard solder pin: Brass, Tin plated
- Item ④ Terminal cover : Thermoplastic (UL94V-0)
- Item ⑤ Terminal housing: Thermoplastic (UL94V-0)

Electrical

- Voltage rating: 300VAC
- Current rating: 20A
- Wire range:
- Solid wire(AWG): 12-22
- Stranded wire(AWG): 12-22
- Torque(Lb-In): 4.3
- Screw: M3
- Wire strip length: 6-7mm
- Withstanding Voltage: 1.6KV
- Operating temperature: -40°C to +115°C
- Soldering temperature: 250°C±10°C/5 Sec
- △ Safety Approval:



EB xx 2 1 x 0 xxxx G


04	2x2 CONTACTS	0	Black	0000:"@Logo (Standard)	RoHS
06	2x3 CONTACTS	5	Green	000A:"ANYTEK"Logo	Pb<40,000ppm
...	...	6	Blue	Any special item by	
48	2x24 CONTACTS	8	Grey	customer request,	
				please contact sales	
				department.	

Poles	2x2p	2x3p	2x4p	2x5p	2x6p	2x7p	2x8p	2x9p	2x10p	2x11p	2x12p	2x13p
Dim L	10.16	15.24	20.32	25.40	30.48	35.56	40.64	45.72	50.80	55.88	60.96	66.04
Dim B	5.08	10.16	15.24	20.32	25.40	30.48	35.56	40.64	45.72	50.80	55.88	60.96
TOL	±0.15				±0.20				±0.25			
Poles	2x14p	2x15p	2x16p	2x17p	2x18p	2x19p	2x20p	2x21p	2x22p	2x23p	2x24p	
Dim L	71.12	76.20	81.28	86.36	91.44	96.52	101.60	106.68	111.76	116.84	121.92	
Dim B	66.04	71.12	76.20	81.28	86.36	91.44	96.52	101.60	106.68	111.76	116.84	
TOL	±0.25		±0.30				±0.35					

ANYTEK

CUSTOMER COPY

ALL RIGHTS RESERVED. REPRODUCTION OR ISSUE TO THIRD PARTIES IN ANY FORM WHATSOEVER IS NOT PERMITTED WITHOUT WRITTEN AUTHORITY FROM THE PROPRIETOR. PROPERTY OF ANYTEK TECHNOLOGY CO., LTD

TITLE		EB 5.08mm Series With cover type (Interlace)									
PART NO.		EBxx21x0xxxxG				DWG NO.		8EB0101			
APPROVED	CHECKED	DESIGNED	DRAWN	CUST NO.					Tolerance		
		Aaron 2009.10.09	Aaron 2009.10.09						UNIT: mm		X. ±0.50
				SHEET: 01/03	SCALE: NONE		X.X ±0.30				
					REV: C		X.XX ±0.10				
							X° ±1°				