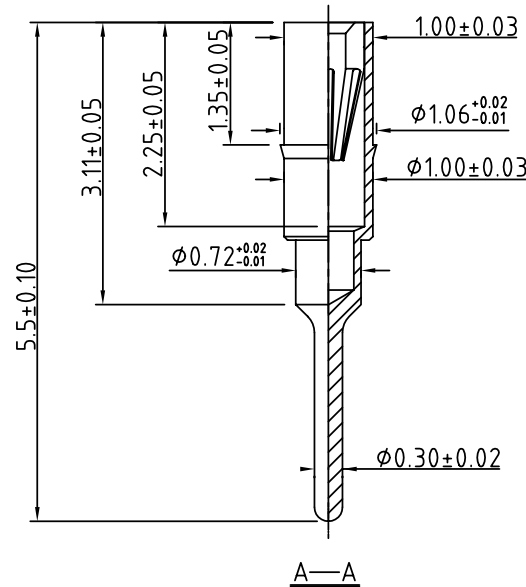
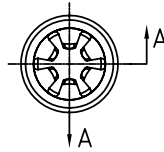


SIGN	DATE	DESCRIPTION	APPROVER
△			
△			
THIS IS CAD DRAWING, DO NOT REVISE MANUALLY!!!			



Technical Data:

● Material:

Pin (outer sleeve) : Brass,machined, CuZn38Pb2.

Plating(outer sleeve) : Tin plated: Ni 80 u"-120 u"+Sn 200 u"

Gold plated: Ni 80 u"-120 u"+Au 1u"-3u"

● Electrical

Maximum current :1A

Contact resistance per contact :<4mΩ

Insulation resistance : 10000MΩ at 500VAC

Rated voltage : 100 VRMS /150VDC

Air and creepage distance : 0.6mm

Capacitance: 0.3pF max

● Mechanical

Average insertion force with steel pin of 0.38mm/.015" : 60g

Average withdrawal force with steel pin of 0.38mm/.015" : 15g

ANYTEK

INSPECTION COPY

ALL RIGHTS RESERVED. REPRODUCTION OR ISSUE TO THIRD PARTIES IN ANY FORM WHATEVER IS NOT PERMITTED WITHOUT WRITTEN AUTHORITY FROM THE PROPRIETOR. PROPERTY OF ANYTEK TECHNOLOGY CO., LTD

TITLE	OR staggered sleeve spec: 5.5mmL (assemble)						
PART NO.	OR6000x00000G			DWG NO.	OR0001		
APPROVED	CHECKED	DESIGNED	DRAWN	CUST NO.	Tolerance		
		Seamus 2005.11.21	Aaron 2004.11.20			UNIT: mm	X. ±0.50
						SCALE: NONE	X.X ±0.30
						REV.: A	X.XX ±0.10
					SHEET: 01/01		X° ±1°